

THE MOKELUMNE WATERSHED INTERREGIONAL SUSTAINABILITY EVALUATION (MOKEWISE) PROGRAM

(July 2013)

Each day, water resource managers are faced with the challenge of balancing competing needs for increasingly precious water supplies between drinking water, environmental needs, recreation, and other uses. Integrated water resource management techniques allow optimization of limited supplies by identifying multi-benefit solutions that incorporate the needs and concerns of a variety of stakeholders.

WHAT IS INTEGRATED REGIONAL WATER MANAGEMENT?

Nearly ten years ago, the State of California embarked on a new venture to implement integrated planning at the regional level, known as Integrated Regional Water Management (IRWM) planning. Over time, this program has evolved into a major



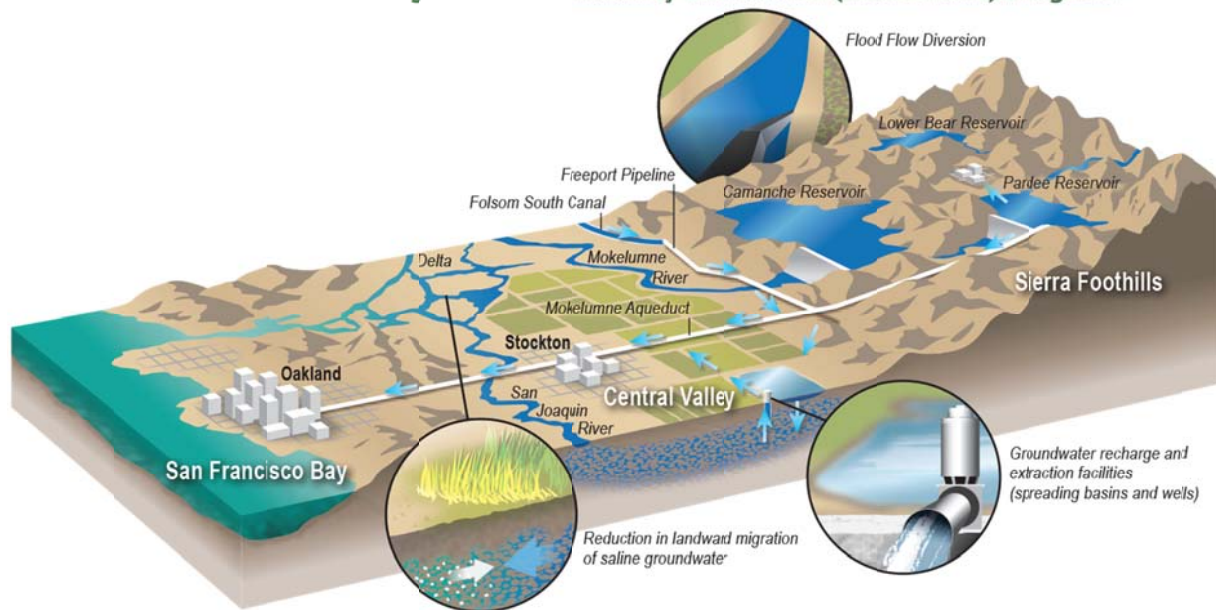
There are currently 48 approved Integrated Regional Water Management planning regions located throughout California.

water resources planning framework implemented statewide, and the California Water Plan cites IRWM as a new paradigm for water planning. Through the IRWM program, the State of California has encouraged collaboration among water supply and wastewater agencies, flood control and stormwater protection districts, resource and regulatory agencies, non-governmental organizations, local governments, and volunteer groups to enhance integration in water management planning – all at the regional level. Through this planning framework, the efforts of individual entities and communities are combined to leverage resources and meet multiple water resource management objectives.

WHAT IS THE MOKEWISE PROGRAM?

The MokeWISE Program has emerged following years of dialogue between a diverse set of stakeholders in the Upper and Lower Mokelumne River watersheds MokeWISE,

Mokelumne Watershed Interregional Sustainability Evaluation (MokeWISE) Program



MokeWISE will identify sustainable approaches to water management in the Mokelumne River watershed.

when concluded, is expected to yield a scientifically-based and broadly-supported water resources program that includes comprehensive and sustainable approaches to water resources management in the Mokelumne River watershed. This Program builds upon earlier interregional project concepts, including the Inter-Regional Conjunctive Use Project (IRCUP), by expanding the scope to include a thorough, holistic evaluation of a wide array of water resource strategies that could be implemented to help balance water supplies and demands and sustain the environment.

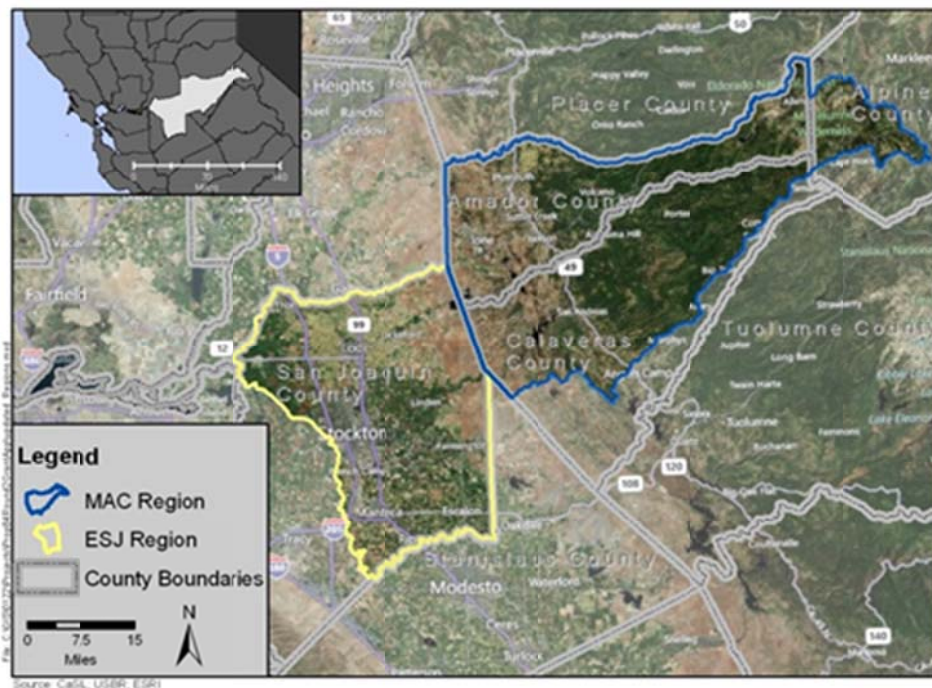
WHO IS INVOLVED?

MokeWISE is being initiated by the Mokelumne-Amador-Calaveras (MAC) and Eastern San Joaquin (ESJ) IRWM Regions and supported through a Proposition 84 grant being provided by the California Department of Water Resources (DWR).

The MAC and ESJ Regions are neighboring regions, with the eastern border of the ESJ region comprising the western border of the MAC region. The county line between Amador County and San Joaquin County, and the county line between Calaveras County, Stanislaus County, and portions of San Joaquin County, establishes the interface between the two regions. Two independent IRWM regions were established because of differing water supply issues, with the ESJ region predominately focused on groundwater and the MAC region on surface water. In addition, with a significant number of agencies and non-governmental organizations interested in water resource issues in each of the two regions and the significant distance separating them, a single region was deemed impractical.

Mokelumne Watershed Interregional Sustainability Evaluation (MokeWISE) Program

Although they are separate regions, some stakeholders within the MAC and ESJ regions have been engaged in formal discussions (through the Mokelumne River Forum) for more than six years regarding their needs and interests and motivated by potential interregional water resource strategies of mutual benefit. Through the regular dialogue that has taken place over this time, the two regions have recognized a need for effective interregional coordination as the basis for evaluating potential opportunities and establishing multi-benefit interregional programs and projects. The two regions realize that working together, rather than independently, is the most promising approach to addressing critical water resource issues spanning the two adjoining regions. They also understand that broad and diverse stakeholder agreement is fundamental to the ultimate success of any interregional program.



MokeWISE is being initiated by the Mokelumne-Amador-Calaveras and Eastern San Joaquin IRWM Regions with funding from the California Department of Water Resources.

Both IRWM regions are overseen by Regional Water Management Groups (RWMGs) The Northeastern San Joaquin Groundwater Banking Authority (GBA) administers to the ESJ Region, and the Upper Mokelumne River Watershed Authority (UMRWA) to the MAC Region.

The MAC and ESJ Regional Water Management Groups are in the process of establishing a stakeholder committee which will actively guide the MokeWISE Program through to its completion. Participating stakeholders will be expected to represent the interests of their organization in a series of facilitated meetings during the two year collaborative MokeWISE planning process. Active and meaningful stakeholder involvement will be critical to the project.

Mokelumne Watershed Interregional Sustainability Evaluation (MokeWISE) Program

IRWM Regional Water Management Groups	
<i>MAC Region</i>	<i>ESJ Region</i>
Upper Mokelumne River Watershed Authority	Northeastern San Joaquin Groundwater Banking Authority
<ul style="list-style-type: none"> • UMRWA Member AgenciesAlpine County • Alpine County Water Agency • Amador County • Amador Water Agency • Calaveras County • Calaveras County Water District • Calaveras Public Utility District • East Bay Municipal District • Jackson Valley Irrigation District 	<ul style="list-style-type: none"> • GBA Member AgenciesCity of Stockton • California Water Service Company • City of Lodi • Woodbridge Irrigation District • North San Joaquin Water Conservation District • Central San Joaquin Water Conservation District • Stockton East Water District • Central Delta Water Agency • South Delta Water Agency • San Joaquin County Flood Control and Water Conservation District • San Joaquin Farm Bureau Federation (Associate Member)

WHAT ARE THE PROGRAM OBJECTIVES?

MokeWISE will develop and evaluate alternatives to optimize water resources management within the MAC and ESJ Regions. The ultimate purpose of this interregional planning project is to develop a broadly-supported preferred water resources program that meets both regions’ needs as well as the needs of regional stakeholders and interest groups.

The MokeWISE Program will:

- 1) Evaluate alternatives for integrated water management on an interregional scale, with the potential to provide water supply and environmental benefits to a broad range of Mokelumne River basin stakeholders
- 2) Identify a mutually preferred program alternative
- 3) Develop a bi-regional plan to implement the preferred alternative

Envisioned program benefits include:

- Storage and supplies for drought protection and to meet the future water needs of the citizens of Amador and Calaveras Counties.
- Long-term drought protection for areas of Alameda and Contra Costa Counties that are served by EBMUD.
- Drought protection and water quality protection and enhancement through creation of a hydraulic barrier to prevent further salinity intrusion in the Eastern San Joaquin Groundwater Basin.
- Replenishment of the groundwater basin by storing wet weather flows and then using that stored water to meet the supply and environmental needs of the citizens overlying the Eastern San Joaquin Groundwater Basin.
- Maintained and improved environmental and natural resource conditions within the watershed, including Mokelumne River fisheries.
- Long-term balance of water supply and demand.
- Resolution of long-standing regional and interregional conflicts, which in turn could lead to cooperative approaches and funding for demand management, water use efficiency, water

reclamation and reuse, watershed protection and improvement, aquatic and terrestrial habitat improvement, and recreational benefits across jurisdictional boundaries.

WHAT TYPES OF SUPPLIES WILL BE CONSIDERED?

Available sources of water supply to be evaluated will include:

- The Mokelumne River
- Increased in-Delta diversions
- Water made available by improved groundwater management
- Treated, disinfected municipal wastewater
- Treated stormwater runoff
- Water savings from higher levels of municipal and agricultural water use efficiency and wastewater reuse
- Desalination



HOW CAN I GET INVOLVED?

It is currently envisioned that there will be multiple options available to interested stakeholders who wish to get involved in MokeWISE.

- 1) **Serve on the stakeholder committee.** The MAC and ESJ Regional Water Management Groups are in the process of assembling a stakeholder committee to represent the interests of both regions and guide the technical work completed for MokeWISE. Stakeholders will be asked to commit to attend a series of 22 monthly, all-day meetings through the course of the project; carefully review and provide active and constructive feedback on technical materials and resource management strategies; and work collaboratively with other stakeholders to develop and select a preferred alternative through a collaborative decision-making process.
- 2) **Follow the Project Informally through Website Postings.** One of the first tasks to be completed in support of the project is development of a MokeWISE website. The project website will be the primary means of communicating project-related news and announcements to interested parties and the public. Because the project has not yet officially begun, the website is not yet up and running. Once it has been developed, it will be accessible via links from the UMRWA and Northeastern San Joaquin GBA webpages (www.umrwa.org and <http://www.gbawater.org>, respectively).
- 3) **Attend Public Workshops and Board Briefings.** Throughout the project, a series of five public workshops will be held in the watershed. These workshops will be focused on

MokeWISE will consider a wide variety of supplies in addition to surface water from the Mokelumne River.

Mokelumne Watershed Interregional Sustainability Evaluation (MokeWISE) Program

providing informative updates on project-related activities, and soliciting feedback on activities and materials. In addition, the UMRWA and Northeastern San Joaquin GBA Boards of Directors will receive monthly briefings on project status. These meetings are open to the public and any interested parties are encouraged to attend.

- 4) **Follow the Project as an Interested Party.** It is currently envisioned that interested stakeholders may follow project activities and developments as an interested party. Interested parties will be copied on project-related information and announcements and kept informed of activities.

ADDITIONAL INFORMATION AND RESOURCES

The following links provide additional information on the IRWM Program, the MAC and ESJ Regions, and the agencies initiating MokeWISE. For additional information, or to be added to the Interested Parties list, please contact Jordie Bornstein at jordie@rainwater-associates.com.



- Department of Water Resources Integrated Regional Water Management Grants program website: <http://www.water.ca.gov/irwm/grants/index.cfm>
- Upper Mokelumne River Watershed Authority website: <http://www.umrwa.org/>
- Northeastern San Joaquin Groundwater Banking Authority website: <http://www.gbawater.org/>
- MAC Region IRWM Program website: http://www.umrwa.org/mac_region_irwm_program.html
- ESJ Region IRWM Program website: <http://www.gbawater.org/IRWMP/IRWMP.html>